

# INTRODUCING

## Rhombus Europe's wiring accessories for Lutron collections

Fully compatible with:

- Alisse
- Pico
- Palladiom



# Who are we?

**RHOMBUS EUROPE** IS EUROPEAN COMPANY FOCUSED IN PROVIDING PROFESSIONAL PRODUCTS AND SOLUTIONS IN THE RESIDENTIAL, COMMERCIAL AND HOSPITALITY INDUSTRY.

WE CREATE BEST-IN-CLASS HANDCRAFTED SWITCHES & SOCKETS. RHOMBUS EUROPE PROVIDES A COMPLETE RANGE OF CONTEMPORARY ELECTRICAL ACCESSORIES AVAILABLE IN A VARIETY OF FINISHES CRAFTED WITH METICULOUS ATTENTION TO DETAIL.

PRODUCTS ARE DESIGNED, ENGINEERED AND MANUFACTURED BY RHOMBUS EUROPE. WE CREATE A BRIDGE BETWEEN THE ELECTRICAL AND AESTHETIC WORLD WITH COMFORT IN MIND.



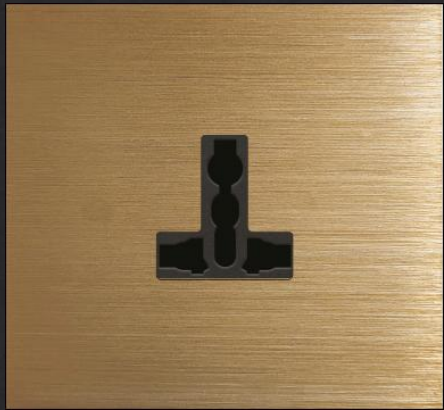
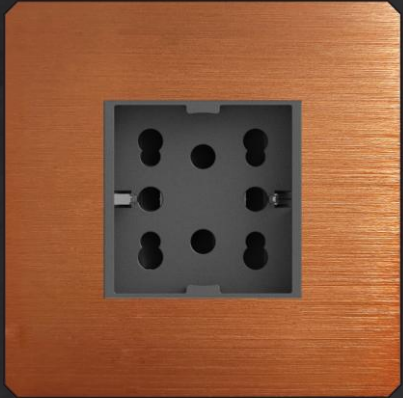
# Lutron & Rhombus Europe collaboration

WITH MORE THAN 10 YEARS OF EXPERTISE IN CRAFTSMANSHIP, WE ARE THE PERFECT MATCH TO CREATE A LINE OF ACCESSORIES TO COMPLEMENT LUTRON'S COLLECTIONS. RHOMBUS EUROPE PROVIDES A COMPLETE RANGE OF CONTEMPORARY ELECTRICAL ACCESSORIES AVAILABLE IN A VARIETY OF FINISHES CRAFTED WITH METICULOUS ATTENTION TO DETAIL.



# Lutron & Rhombus Europe collaboration

WIRING ACCESSORIES THAT EXPRESS THE INDIVIDUALITY OF YOUR INTERIOR AND PERFECTLY COMPLEMENT LUTRON'S COLLECTIONS.

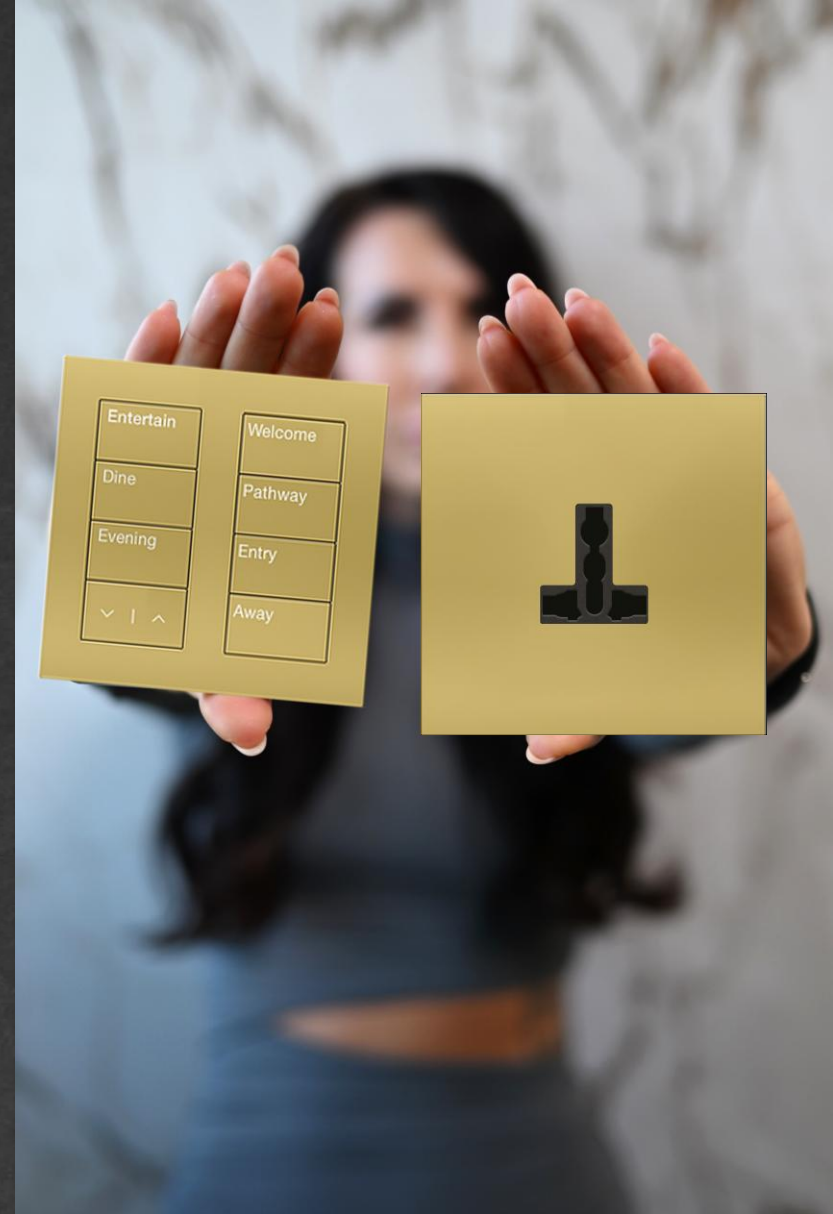


# Wiring accessories

Alice collaboration



TAILORED TO YOUR PREFERENCES!



Palladiom collaboration

# Finishes - Best Sellers

Champagne Brushed



Bronze4 Brushed



Bronze 7 Brushed



Copper Brushed



Dark Grey Brushed

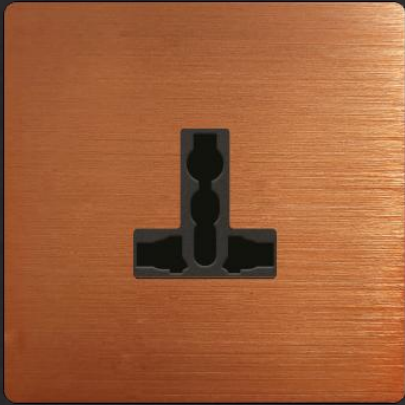


Inox Brushed



# Wiring Accessories

Unlimited configurations completely matching the design direction of your project



# Standards

## All standards

We cover the following **backbox standards**:

- European Standard
- British Standard
- Italian Standard
- American Standard

Please note that it is better to consult the type of backboxes with our team. What kind of backbox must be used depends on different factors like configuration, type of wall etc.



Recommended backbox depth: 40-50 mm  
Rhombus provides custom backboxes for specific projects.

# OEM Partners

Rhombus Europe provides housings of different devices of our OEM Partners. We guarantee **100% customization & 101% satisfaction.**



Crestron



Honeywell



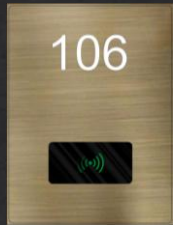
Interel



VDA



Adria



SALTO  
inspiredaccess



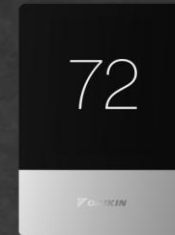
dormakaba



SIEMENS

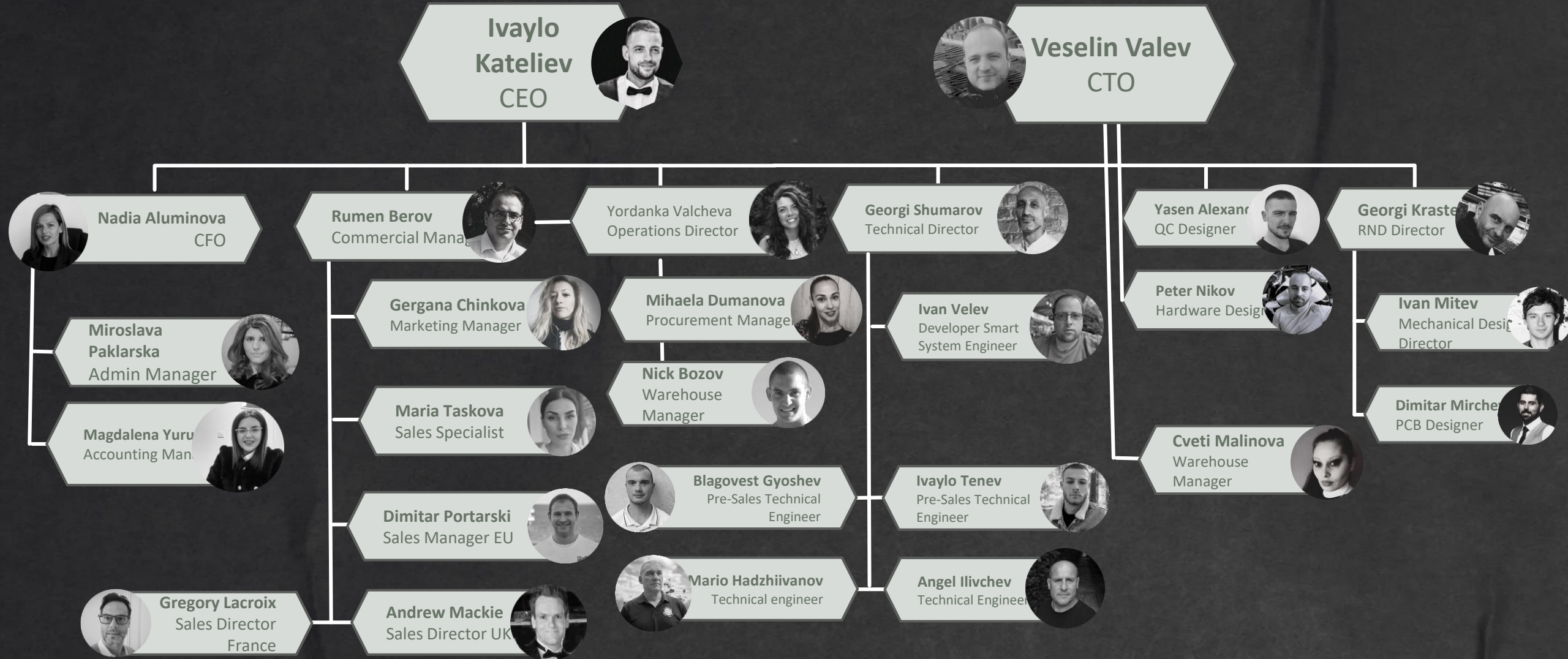


SAMSUNG



DAIKIN

# MAIN TEAM



# CONTACT US

## **Razlog, Bulgaria**

### **Head Office**

2 Hristo Botev Str., 2760

info@rhombus-europe.com

+359 882 444 083

## **Paris, France**

### **Rhombus Office France**

44 avenue de la prouveresse

06530 PEYMEINADE

Gregory Lacroix

fr@rhombus-europe.com

+33 6077 24464

## **Varna, Bulgaria**

### **Factory**

6 Yan Huniyadi Blvd., 9000

info@rhombus-europe.com

+359 882 444 083

## **London, UK**

### **Rhombus Office UK**

Unit 12 Riverview Business  
Park, East Sussex, RH18 5FS

Andrew Mackie

uk@rhombus-europe.com

+44 7817 324 839

## **Sofia, Bulgaria**

### **Showroom Rhombus - Top Group**

17 Bistrishko Shose Str.

info@rhombus-europe.com

+359 882 444 083

## **Dubai, UAE**

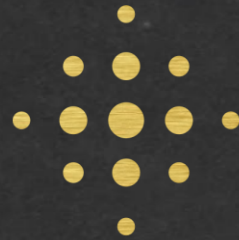
### **Rhombus Office ME**

Icon Tower, Office 203

TECOM, Dubai - UAE

salesme@rhombus-europe.com

THANK YOU FOR YOUR ATTENTION!



R H O M B U S  
E U R O P E

EXCELLENCE IS IN THE DETAILS.